

## TEST REPORT

Report No. : GR:HL:5480009170

DATE : 19<sup>th</sup> April, 2014



**ABS IMPEX..**

D.NO.2-1-84/A POORNA MANSION, SRINAGAR  
KAKINADA-533003  
INDIA

**CONTACT PERSON** : Mr. ANIL CHODAY

**THE FOLLOWING SAMPLE(S) WAS/WERE SUBMITTED AND IDENTIFIED BY/ON BEHALF OF THE CUSTOMER AS :**

**SAMPLE DESCRIPTION** DESICCANT  
**COUNTRY OF ORIGIN** INDIA  
**SAMPLE RECEIVING DATE** 07/04/2014  
**TEST PERFORMING DATE** 07/04/2014 TO 18/04/2014

**TEST REQUESTED** : 1. ROHS Directive 2002/95/EC  
2. Dimethyl Fumarate

**TEST METHOD** : 1. Please refer to next page(s).  
2. In house method : Liquid extraction . Analysis was conducted by GC / MSD .

**CONCLISION** : 1. Based on the performed tests on submitted sample(s), the results **comply with** the RoHS Directive 2002/95/EC and its subsequent amendments.  
2. Please refer to next page(s).

Per Pro SGS India Pvt Ltd.

**Subasini Saraswat**

**Asst. Manager**

Email your Test Report Related Enquiries at Feedback.HLT@sgs.com

**TEST REPORT**

**Report No. : GR:HL:5480009170**

**DATE : 19<sup>th</sup> April, 2014**



**Test Results:**

Test Item(s):	Unit	Test Method	Results Sample-1	MDL	Limit
Cadmium(Cd)	mg/kg	With reference to IEC 62321-5:2013 (Determination of Cd by ICP-OES)	n.d.	5	100
Lead (Pb)	mg/kg	With reference to IEC 62321-5:2013 (Determination of Pb by ICP-OES)	n.d.	5	1000
Mercury (Hg)	mg/kg	With reference to IEC 62321-4:2013 (Determination of Hg by ICP-OES)	n.d.	5	1000
Hexavalent Chromium (CrVI)	mg/kg	With reference to IEC 62321:2008 (Determination of CrVI by UV-VIS)	n.d.	2	1000
<b>Sum of PBBs</b>	mg/kg	With reference to IEC 62321:2008 (Determination of PBB by GC-MS)	<b>n.d.</b>	-	1000
Monobromobiphenyl	mg/kg	With reference to IEC 62321:2008 (Determination of PBB by GC-MS)	n.d.	50	-
Dibromobiphenyl	mg/kg	With reference to IEC 62321:2008 (Determination of PBB by GC-MS)	n.d.	50	-
Tribromobiphenyl	mg/kg	With reference to IEC 62321:2008 (Determination of PBB by GC-MS)	n.d.	50	-
Tetrabromobiphenyl	mg/kg	With reference to IEC 62321:2008 (Determination of PBB by GC-MS)	n.d.	50	-
Hexabromobiphenyl	mg/kg	With reference to IEC 62321:2008 (Determination of PBB by GC-MS)	n.d.	50	-
Pentabromobiphenyl	mg/kg	With reference to IEC 62321:2008 (Determination of PBB by GC-MS)	n.d.	50	-
Heptabromobiphenyl	mg/kg	With reference to IEC 62321:2008 (Determination of PBB by GC-MS)	n.d.	50	-
Octabromobiphenyl	mg/kg	With reference to IEC 62321:2008 (Determination of PBB by GC-MS)	n.d.	50	-
Nonabromobiphenyl	mg/kg	With reference to IEC 62321:2008 (Determination of PBB by GC-MS)	n.d.	50	-
Decabromobiphenyl	mg/kg	With reference to IEC 62321:2008 (Determination of PBB by GC-MS)	n.d.	50	-
<b>Sum of PBDEs</b>	mg/kg	With reference to IEC 62321:2008 (Determination of PBDEs by GC-MS)	<b>n.d.</b>	-	1000
Monobromodiphenyl ether	mg/kg	With reference to IEC 62321:2008 (Determination of PBDEs by GC-MS)	n.d.	50	-

This document is issued by the Company subject to its General Conditions of Service printed overleaf, available on request or accessible at <http://www.sgs.com/terms> and, for electronic format documents, subject to Terms and Conditions for Electronic Documents at [www.sgs.com/terms\\_e-document.htm](http://www.sgs.com/terms_e-document.htm). Attention is drawn to the limitation of liability, indemnification and jurisdiction issues defined therein. Any holder of this document is advised that information contained hereon reflects the Company's findings at the time of its intervention only and within the limits of Client's instructions, if any. The Company's sole responsibility is to its Client and this document does not exonerate parties to a transaction from exercising all their rights and obligations under the transaction documents. This document cannot be reproduced except in full, without prior written approval of the Company. Any unauthorized alteration, forgery or falsification of the content or appearance of this document is unlawful and offenders may be prosecuted to the fullest extent of the law." Unless otherwise stated the results shown in this test report refer only to the sample(s) tested and such sample(s) are retained for 30 days only.

**TEST REPORT**

**Report No. : GR:HL:548009170**

**DATE : 19<sup>th</sup> April, 2014**



Test Item(s):	Unit	Test Method	Results Sample-1	MDL	Limit
Dibromodiphenyl ether	mg/kg	With reference to IEC 62321:2008 (Determination of PBDEs by GC-MS)	n.d.	50	-
Tribromodiphenyl ether	mg/kg	With reference to IEC 62321:2008 (Determination of PBDEs by GC-MS)	n.d.	50	-
Tetrabromodiphenyl ether	mg/kg	With reference to IEC 62321:2008 (Determination of PBDEs by GC-MS)	n.d.	50	-
Pentabromodiphenyl ether	mg/kg	With reference to IEC 62321:2008 (Determination of PBDEs by GC-MS)	n.d.	50	-
Hexabromodiphenyl ether	mg/kg	With reference to IEC 62321:2008 (Determination of PBDEs by GC-MS)	n.d.	50	-
Heptabromodiphenyl ether	mg/kg	With reference to IEC 62321:2008 (Determination of PBDEs by GC-MS)	n.d.	50	-
Octabromodiphenyl ether	mg/kg	With reference to IEC 62321:2008 (Determination of PBDEs by GC-MS)	n.d.	50	-
Nonabromodiphenyl ether	mg/kg	With reference to IEC 62321:2008 (Determination of PBDEs by GC-MS)	n.d.	50	-
Decabromodiphenyl ether	mg/kg	With reference to IEC 62321:2008 (Determination of PBDEs by GC-MS)	n.d.	50	-

**Sample Description: 1.** Desiccant (Powder only).

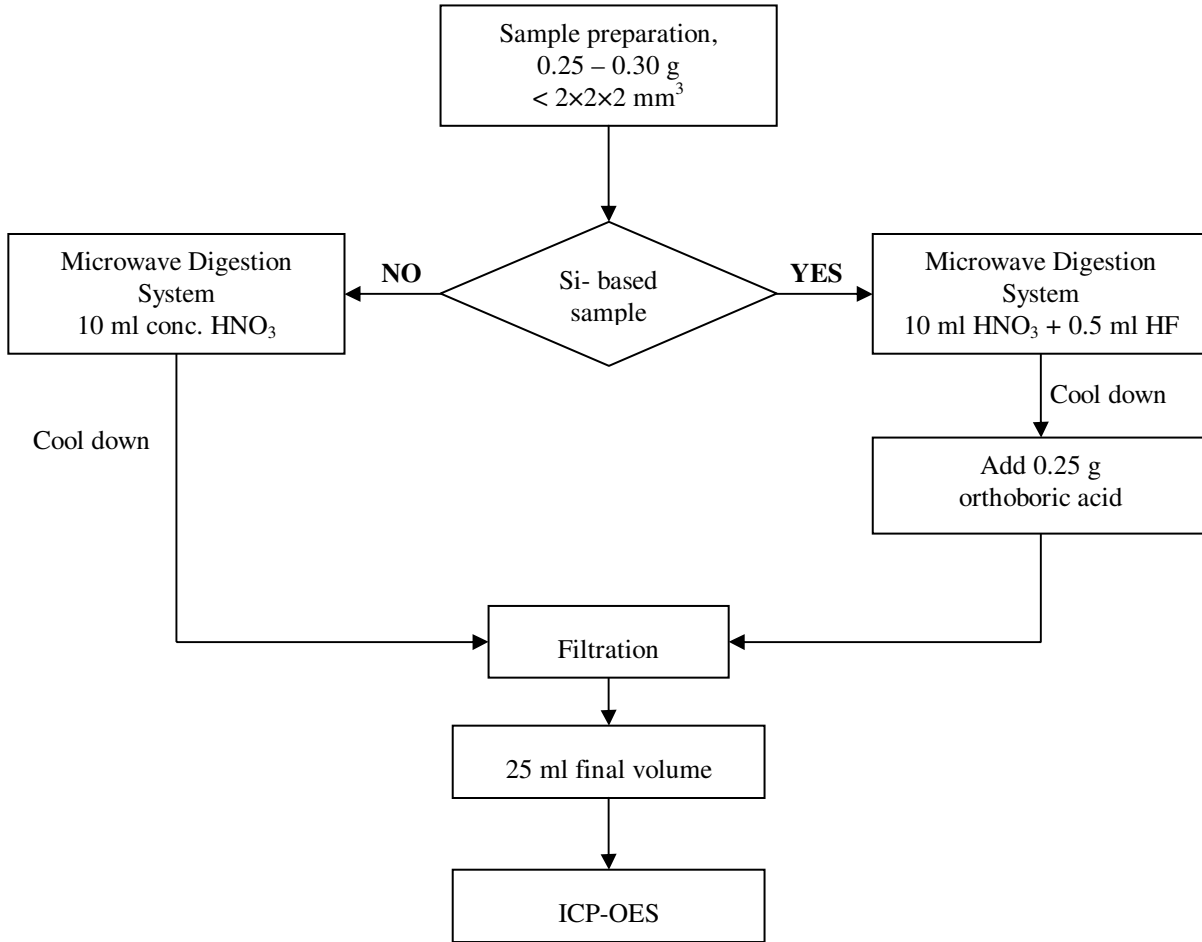
**Note :**

- (a) mg/kg = ppm ; 0.1wt% = 1000ppm
- (b) n.d.= not detected
- (c) MDL = Method Detection Limit
- (d) ## = The exemption of DecaBDE in polymeric application according 2005/717/EC was overruled by the European Court of Justice by its decision of 01.04.2008. Subsequently DecaBDE is included in the sum of PBDE after 01.07.2008
- (e) - = not regulated

This document is issued by the Company subject to its General Conditions of Service printed overleaf, available on request or accessible at <http://www.sgs.com/terms> and, for electronic format documents, subject to Terms and Conditions for Electronic Documents at [www.sgs.com/terms\\_e-document.htm](http://www.sgs.com/terms_e-document.htm). Attention is drawn to the limitation of liability, indemnification and jurisdiction issues defined therein. Any holder of this document is advised that information contained hereon reflects the Company's findings at the time of its intervention only and within the limits of Client's instructions, if any. The Company's sole responsibility is to its Client and this document does not exonerate parties to a transaction from exercising all their rights and obligations under the transaction documents. This document cannot be reproduced except in full, without prior written approval of the Company. Any unauthorized alteration, forgery or falsification of the content or appearance of this document is unlawful and offenders may be prosecuted to the fullest extent of the law." Unless otherwise stated the results shown in this test report refer only to the sample(s) tested and such sample(s) are retained for 30 days only.



**Process Flow for analysis of metal contents in plastics, metals and electronic components sample**

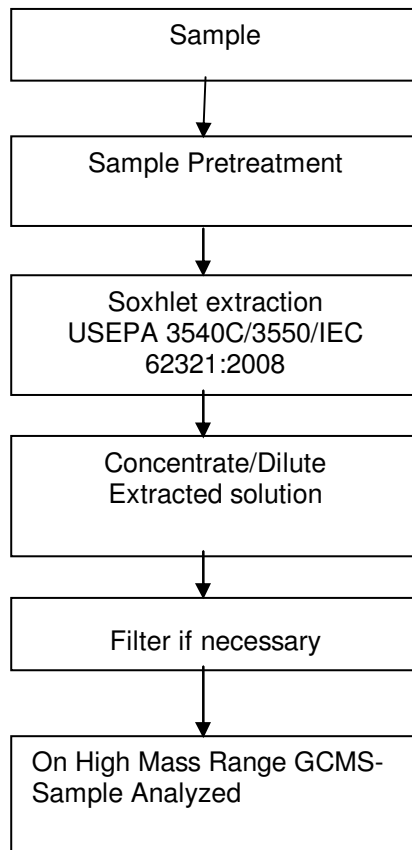


Analyzed by : MS. Suman Mandrwal

Checked By : Mr. Kapil Patil



**Process Flow for analysis of Flame Retardants in plastics, metals and electronic components sample**

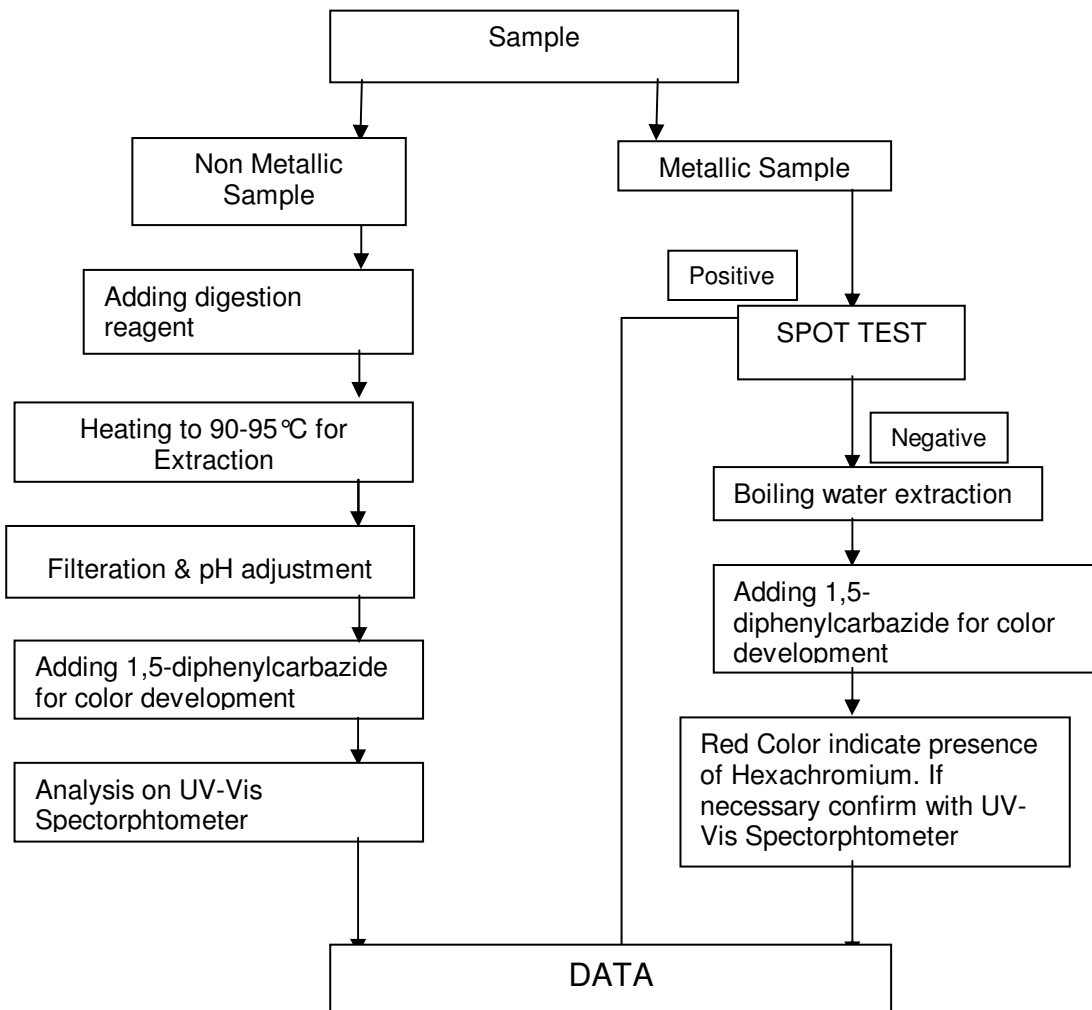


**Analyzed by : MS. Suman Mandrwal**

**Checked By : Mr. Kapil Patil**



**Process Flow for analysis of Hexachromium contents in plastics, metals and electronic components sample**



Analyzed by : MS. Suman Mandrwal

Checked By : Mr. Kapil Patil

## TEST REPORT

Report No. : GR:HL:548009170

DATE : 19<sup>th</sup> April, 2014



### DETERMINE THE DIMETHYL FUMARATE CONTENT :

Test Requested : To determine the Dimethyl Fumarate Contents in the submitted samples.

Test Method : In house method : Liquid extraction . Analysis was conducted by GC / MSD .

Test Result	: <u>Test</u>	<u>Result</u>	<u>Method Detection Limit(MDL)</u>
	Dimethyl Fumarate (mg/kg)	ND	0.1 mg/kg

**Sample Discription :** Desiccant (powder only) .

**Note:**

- 1) ND = Not Detected
- 2) mg/kg = milligrams/kilogram
- 3) Above test has been subcontracted to SGS India Pvt. Ltd. RSTS LAB Gurgaon.

Sample as Received



\*\*\*\*\* End of Report\*\*\*\*\*

This document is issued by the Company subject to its General Conditions of Service printed overleaf, available on request or accessible at <http://www.sgs.com/terms> and, for electronic format documents, subject to Terms and Conditions for Electronic Documents at [www.sgs.com/terms\\_e-document.htm](http://www.sgs.com/terms_e-document.htm). Attention is drawn to the limitation of liability, indemnification and jurisdiction issues defined therein. Any holder of this document is advised that information contained hereon reflects the Company's findings at the time of its intervention only and within the limits of Client's instructions, if any. The Company's sole responsibility is to its Client and this document does not exonerate parties to a transaction from exercising all their rights and obligations under the transaction documents. This document cannot be reproduced except in full, without prior written approval of the Company. Any unauthorized alteration, forgery or falsification of the content or appearance of this document is unlawful and offenders may be prosecuted to the fullest extent of the law." Unless otherwise stated the results shown in this test report refer only to the sample(s) tested and such sample(s) are retained for 30 days only.