

DRY BAG INSTALLATION GUIDE

Option 1: Horizontal Installation - Hang the Dry Bag with hook



I. Cut Open the Dry bag box



II. Take out the Dry Bag



III. Cut open the outer plastic cover

(do not cut DryBag)



IV. Take out the DryBag



V. Detach the hook from the top



VI. Place the hook on the 2 loops

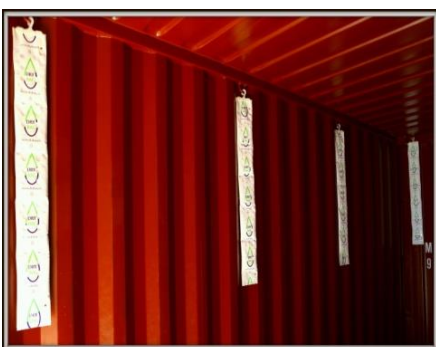


VII. Push the hook on the 2 loops pressing through until it clicks



VIII. Press hook securely on to hanger loop

Sample Pictures :



Option 2: Vertical Installation - Hang the Dry Bag with cable ties



I. Put cable tie through hole
Front side



II. Put cable tie through hole
Backside



III. Tighten the ties to make
DryBag straight & stiff

Sample Pictures :



NOTE: For maximum absorption, keep some space (5-10cm) in between cargo and Dry Bag.
DRY BAG should not be blocked by cargo. It is recommended to install DRYBAG after the stuffing is completed before closing the gate.

NOT RECOMMENDED : Ensure DRYBAG is not blocked as shown below :

